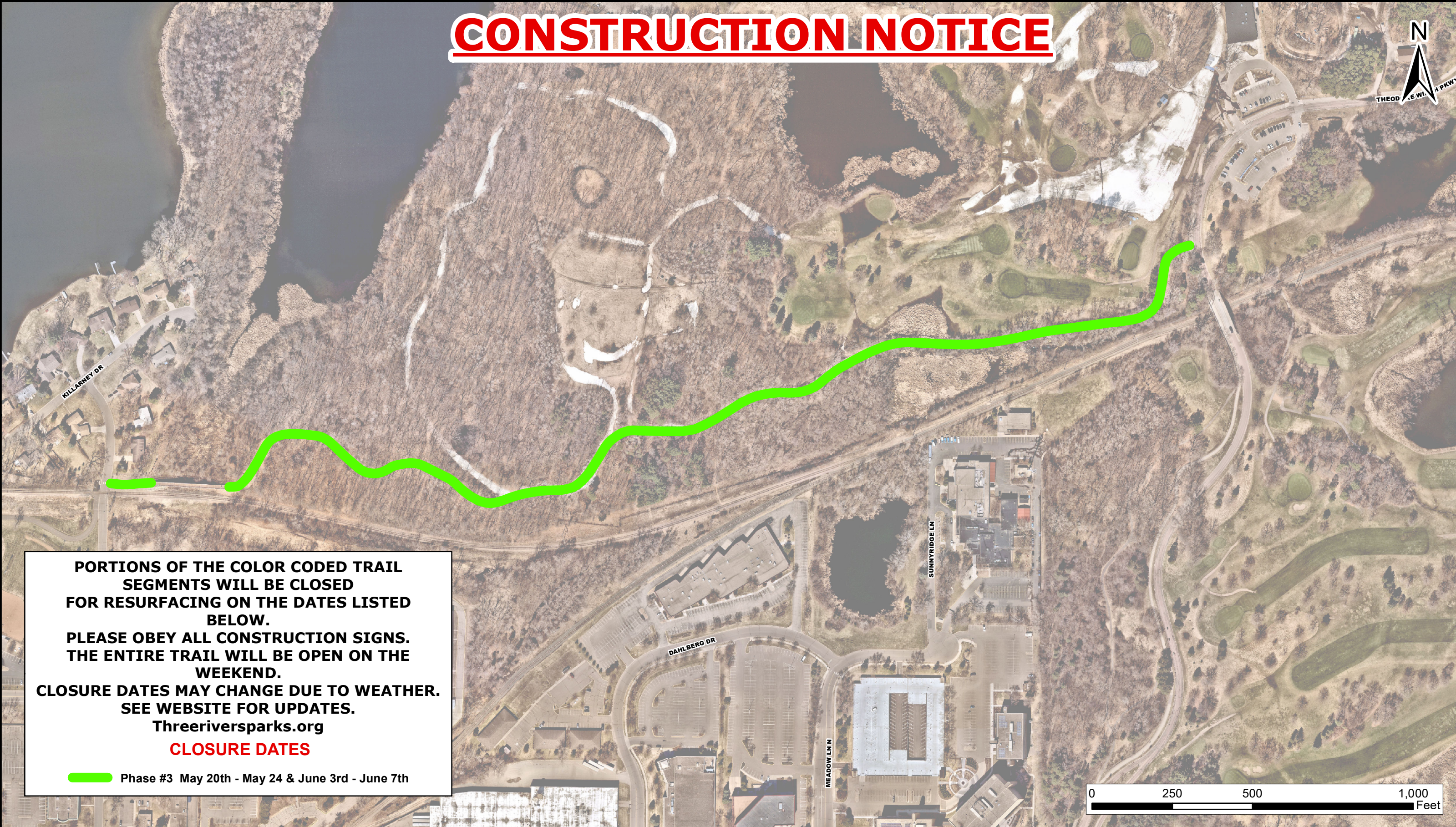


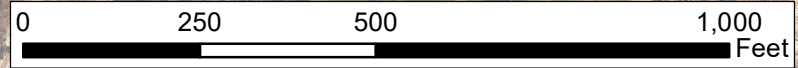
CONSTRUCTION NOTICE



PORTIONS OF THE COLOR CODED TRAIL SEGMENTS WILL BE CLOSED FOR RESURFACING ON THE DATES LISTED BELOW. PLEASE OBEY ALL CONSTRUCTION SIGNS. THE ENTIRE TRAIL WILL BE OPEN ON THE WEEKEND. CLOSURE DATES MAY CHANGE DUE TO WEATHER. SEE WEBSITE FOR UPDATES. Threeriversparks.org

CLOSURE DATES

 Phase #3 May 20th - May 24 & June 3rd - June 7th



Luce Line Regional Trail Microsurfacing Project #2 (East)

Department of Design
Created by: ATB
Map Created 5/9/24