

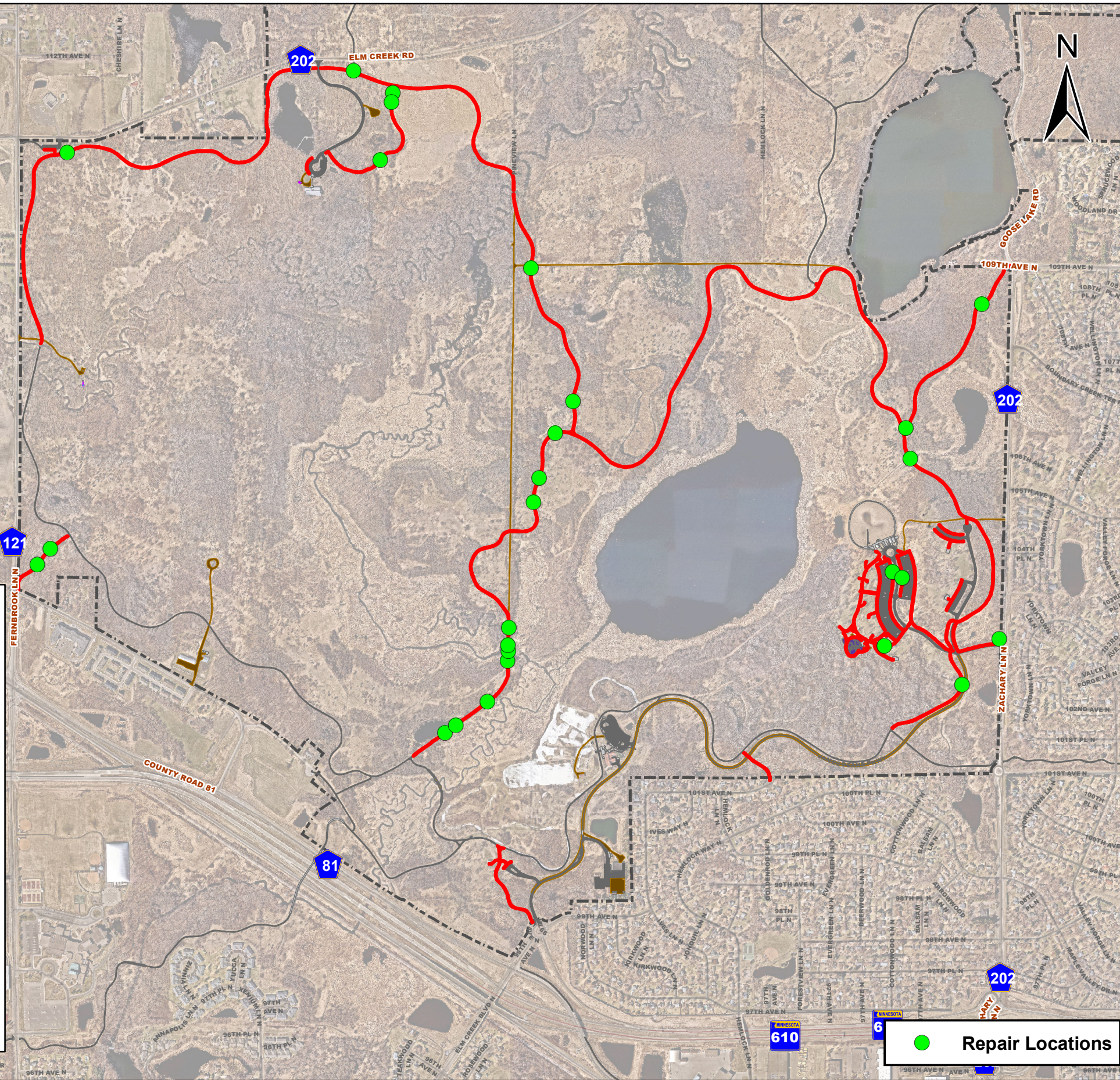
CONSTRUCTION NOTICE

PAVEMENT REPAIRS WILL BE TAKING PLACE ON PORTIONS OF THE HIGHLIGHTED TRAIL.

May 6th - May 10th & May 13th - May 17th

THE TRAIL WILL REMAIN OPEN DURING THESE REPAIRS. PLEASE USE CAUTION AND OBEY ALL CONSTRUCTION SIGNS. USE ALTERNATE ROUTE IF POSSIBLE.

TRAIL CLOSURE DATES MAY CHANGE DUE TO WEATHER DELAYS



This map is a compilation of data from various sources and is provided "as is" without warranty of any representation of accuracy, timeliness, or completeness. The user acknowledges and accepts the limitations of the Data, including the fact that the Data is dynamic and in a constant state of maintenance, correction, and update.

Elm Creek Park Reserve 2024 AMP Pre-Repair Project

Department of: Design
Created by: ATB
Map Created: 4/19/2024

