

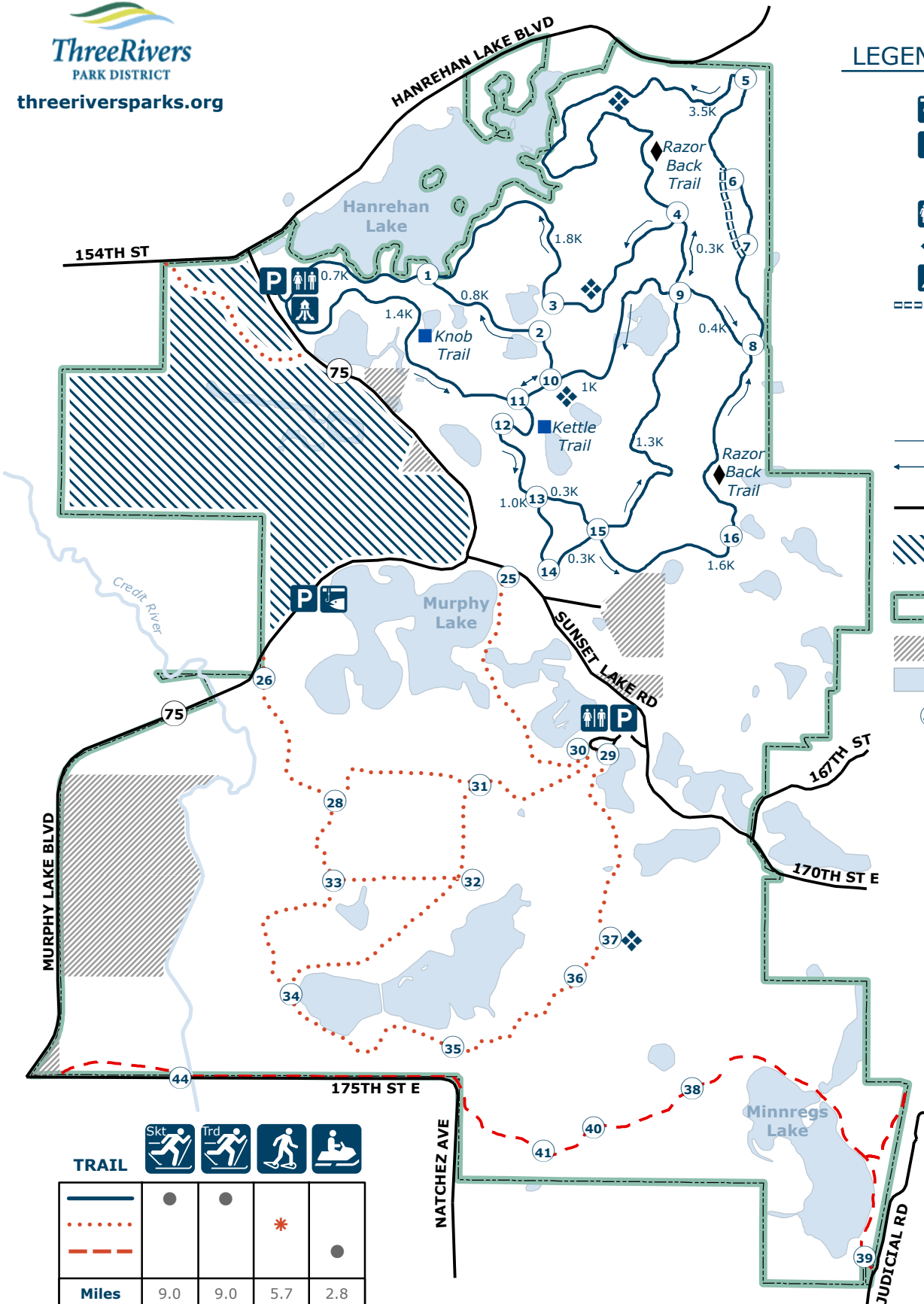
MURPHY-HANREHAN PARK RESERVE



threeriversparks.org

LEGEND: Updated: 11/1/2010

- ice fishing access
- parking
**No Snowmobile
Trailer Parking**
- restrooms
- rest area
- trailhead
- bypass trail
- least difficult
- more difficult
- most difficult
- trail direction
- two-way - keep right
- road
- special recreation area - mtn. bike, hiking, snowshoe
- park boundary
- private property
- lake
- trail intersection numbers



TRAIL				
	●	●		
			*	
				●
Miles	9.0	9.0	5.7	2.8

* Multi-use trail (dog sledding, skijoring, horseback riding, snowshoeing, walking, dog allowed on leash)

0.5/0.8

Miles/Kilometers

