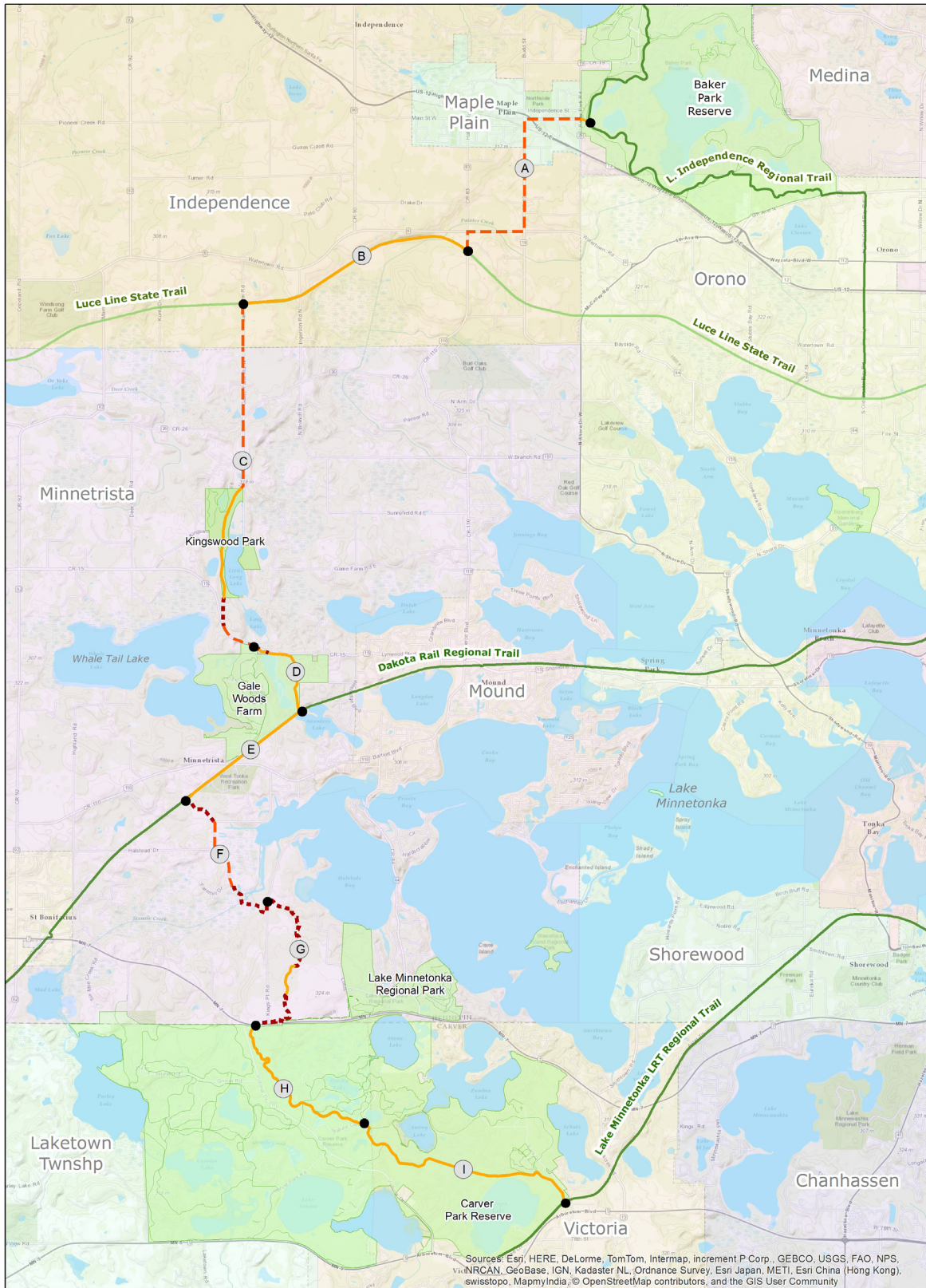




# Appendix E

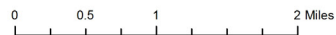
## Property Acquisition Map

*This page left intentionally blank*



## Baker/Carver Regional Trail General Acquisition Plan

- No Acquisition Needs
- 0-10 Feet
- Minimum 20 Feet



Map prepared by Three Rivers Park District Planning Department - KG Sept. 3, 2014

This GIS Data is provided "as is" without warranty of any representation of accuracy, timeliness, or completeness. The user acknowledges and accepts the limitations of the Data, including the fact that the Data is dynamic and is in a constant state of maintenance, correction, and update.

*This page left intentionally blank*