



Appendix C

Regional Trail Segmentation Maps

This page left intentionally blank



Proposed Regional Trail | Segment A

Status: Tentative Construction 10+ Years

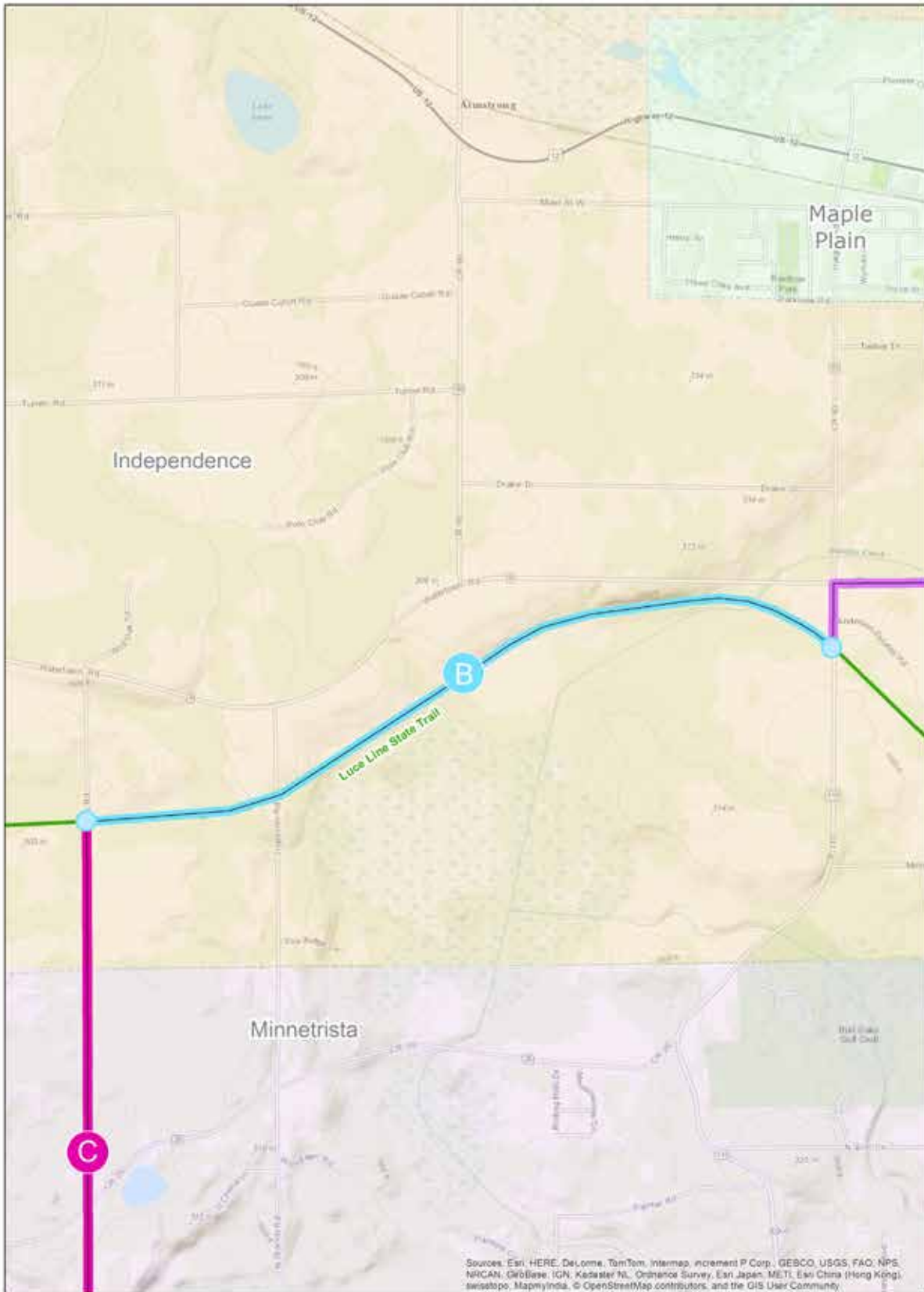
Map prepared by Three Rivers Park District
Planning Department - HK August 12, 2014

This GIS Data is provided "as is" without warranty of any representation of accuracy, timeliness, or completeness. The user acknowledges and accepts the limitations of the Data, including the fact that the Data is dynamic and is in a constant state of maintenance, correction, and update.



Three Rivers
PARK DISTRICT





Proposed Regional Trail | Segment B

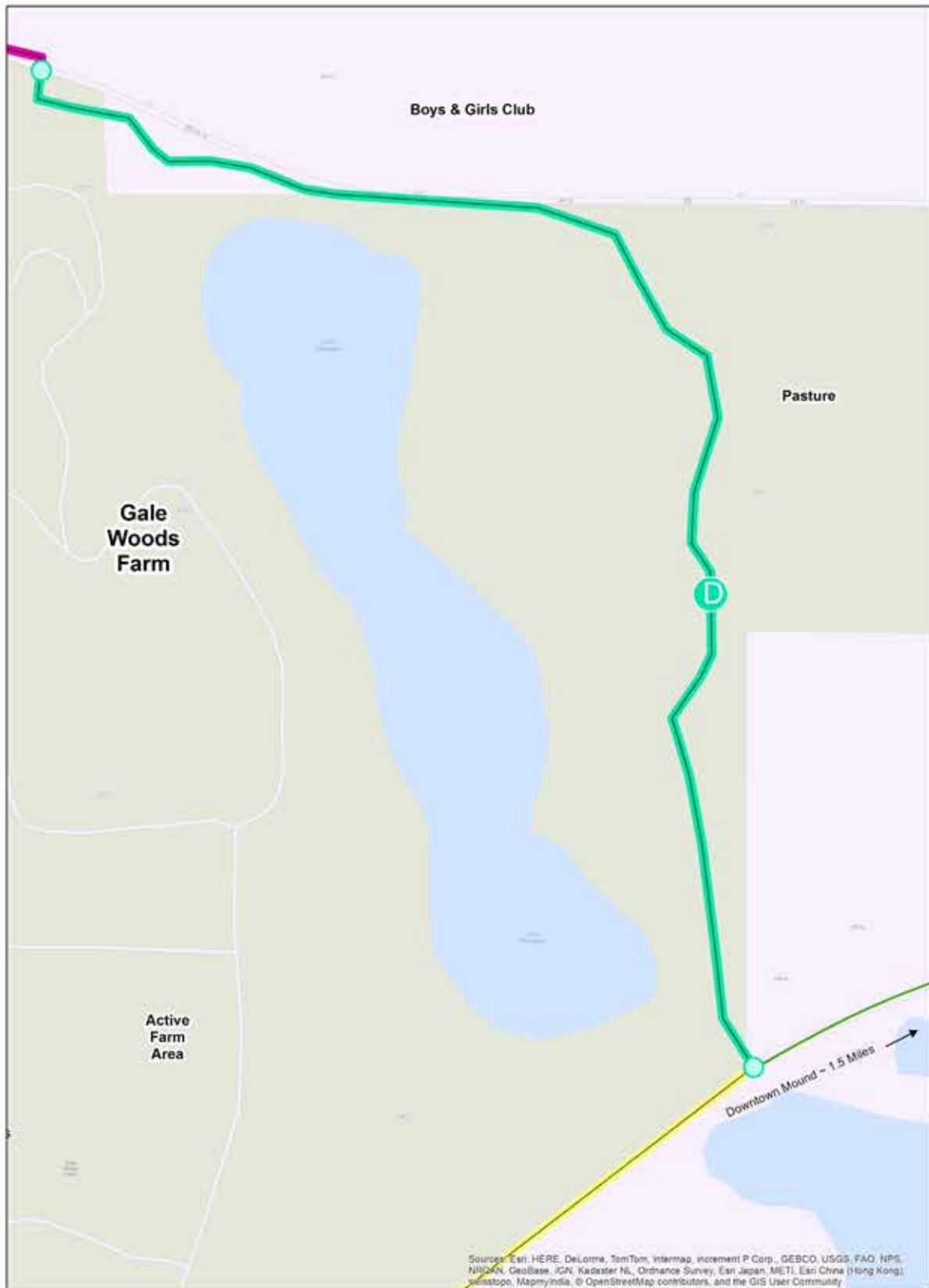
Status: Constructed (Aggregate)/Open to the Public

Map prepared by Three Rivers Park District Planning Department - 10/1 August 12, 2014.
 This GIS Data is provided "as is" without warranty of any representation of accuracy, timeliness, or completeness. The user acknowledges and accepts the limitations of the Data, including the fact that the Data is dynamic and is in a constant state of maintenance, correction, and update.

Three Rivers
 PARK DISTRICT

NORTH

0 0.15 0.3 0.6 Miles

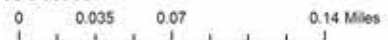


Proposed Regional Trail | Segment D

Status: Tentative Construction 15+ Years

Map prepared by Three Rivers Park District
Planning Department - HC on August 8, 2018

This GIS Data is provided "as is" without warranty of any representation of accuracy, timeliness, or completeness. The user acknowledges and accepts the limitations of the Data, including the fact that the Data is dynamic and is in a constant state of maintenance, correction, and update.





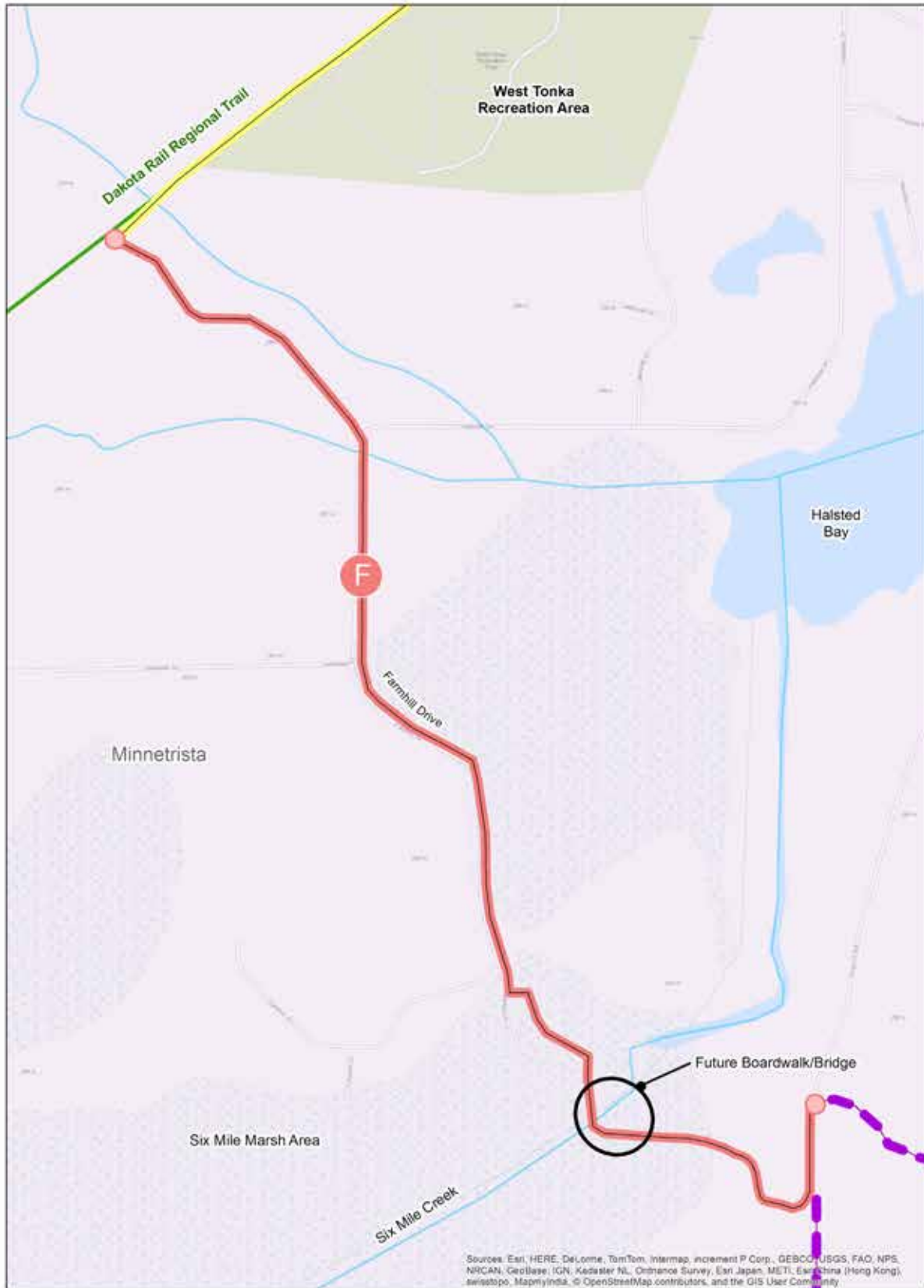
Proposed Regional Trail | Segment E

Status: Constructed/Open to the Public

Map prepared by Three Rivers Park District Planning Department - 10/1 August 2014
 The GIS data provided is a "best available" representation of accuracy. Responsibility for the inclusion of this data, including the fact that the data is accurate and a true reflection of the location, direction, and length

Source: ERI HERE, DeLorme, TomTom, Intermap, increment P Corp., GEBCO, USGS, FAO, NPS, NRCAN, GeoBC, IGN, Kadaster NL, Opencast, Swxy, Esri, Japan, METI, Esri China (Hong Kong), Swisstopo, Mapbox, Mapbox, © OpenStreetMap contributors, and the GIS User Community





Proposed Regional Trail | Segment F

Status: Tentative Construction 10+ Years

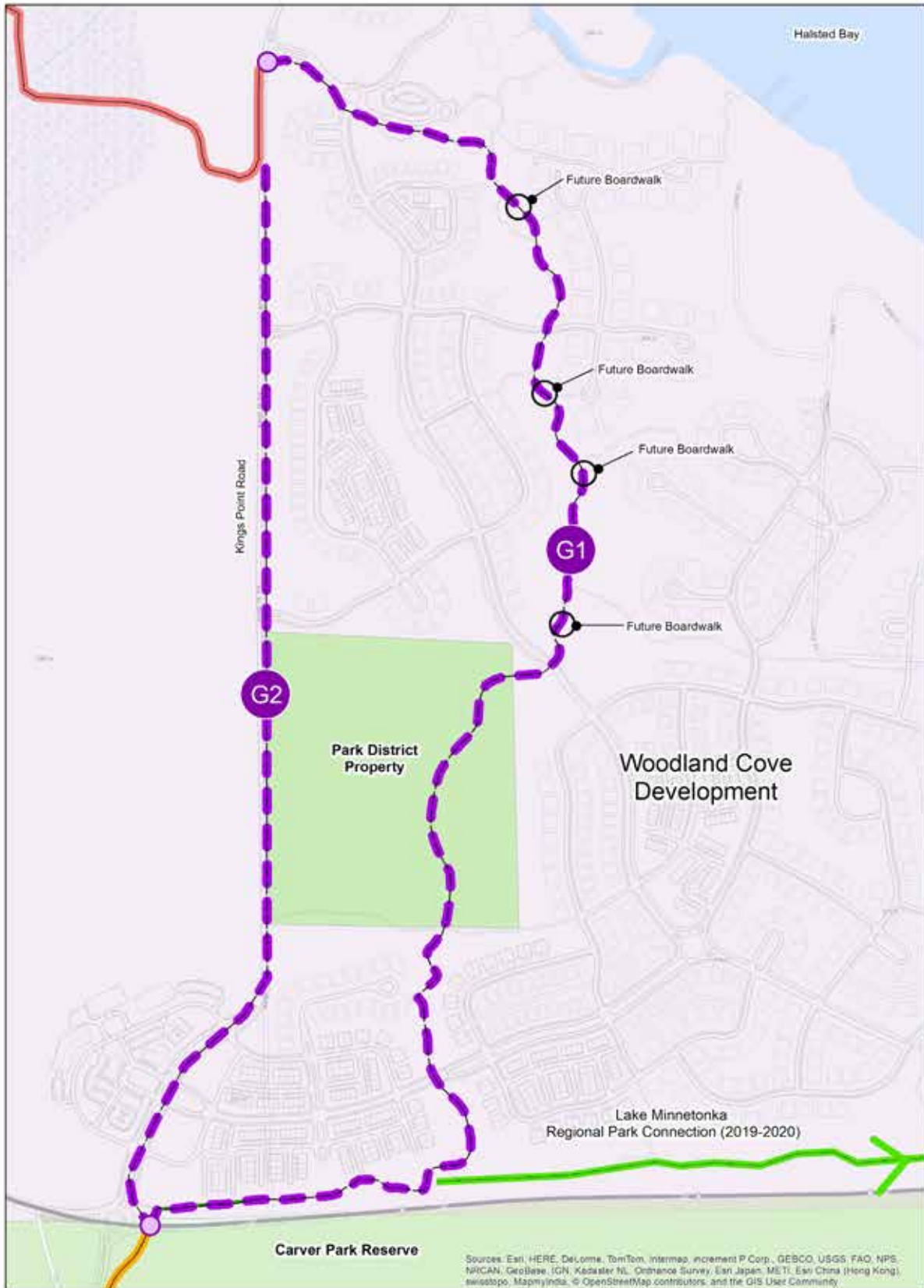
Map prepared by Three Rivers Park District
Planning Department - HR August 11, 2014

This GIS Data is provided "as is" without warranty of any representation of accuracy, timeliness, or completeness. The user acknowledges and accepts the limitations of the Data, including the fact that the Data is dynamic and is in a constant state of maintenance, correction, and update.



0 0.05 0.1 0.2 Miles





Proposed Regional Trail | Segment G

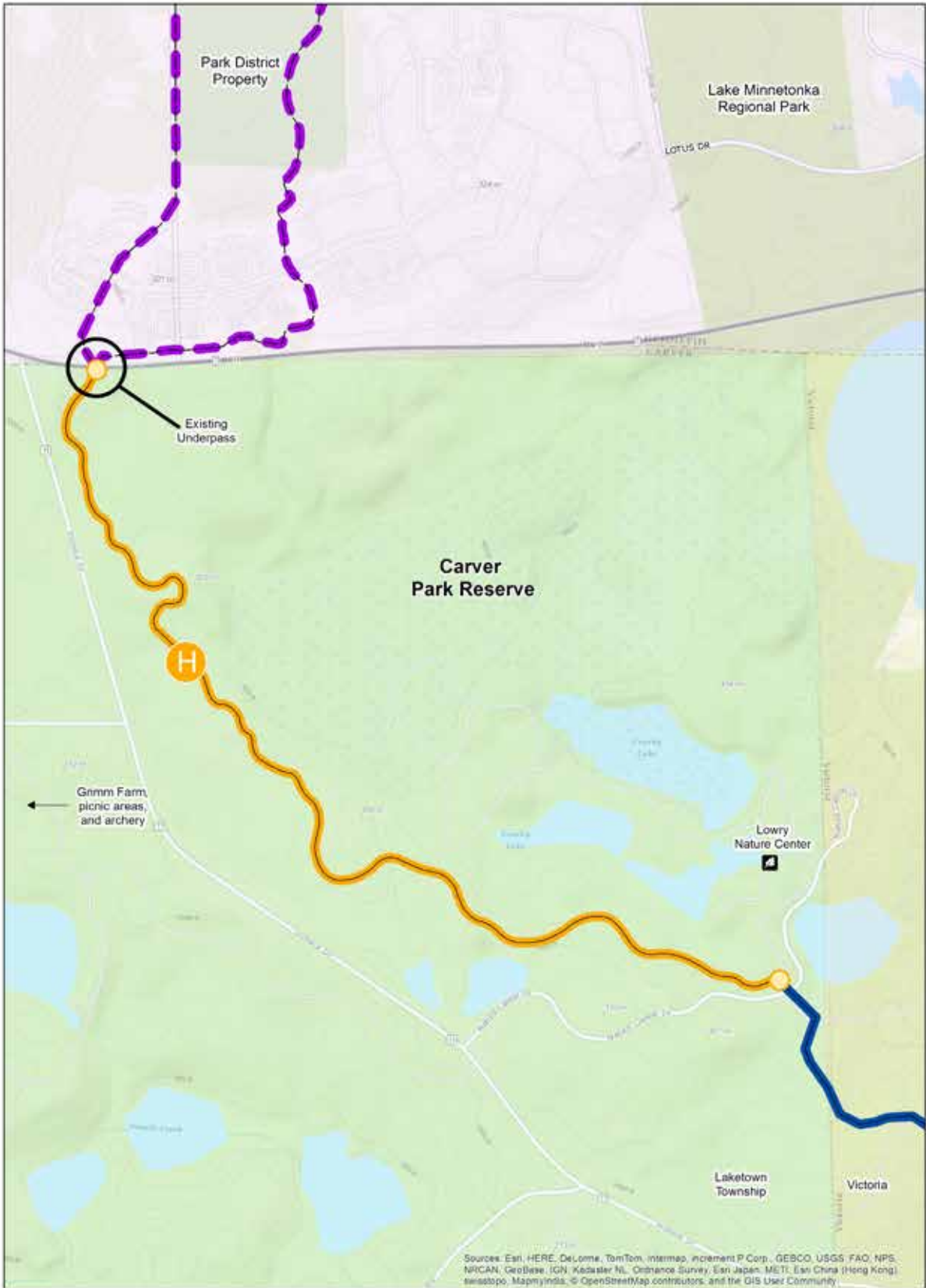
Status: Tentative Reconstruction of Alternate Route G1 20+ years
 -or- Tentative Construction of Alternate Route G2 10+ years

Map prepared by Three Rivers Park District
 Planning Department - 14C August 11, 2014

This GIS Data is provided "as is" without warranty of any representation of accuracy, timeliness, or completeness. The user acknowledges and accepts the limitations of the Data, including the fact that the Data is dynamic and is in a constant state of maintenance, correction, and update.

Sources: Esri, HERE, DeLorme, TomTom, Intermap, increment P Corp., GEBCO, USGS, FAO, NPS, NRCAN, GeoBase, IGN, Kadaster NL, Ordnance Survey, Esri Japan, METI, Esri China (Hong Kong), Swisstopo, MapmyIndia, © OpenStreetMap contributors, and the GIS User Community





Proposed Regional Trail | Segment H

Status: Tentative Construction 2019/2020

Map prepared by Three Rivers Park District Planning Department - 19 August 27, 2014
 This GIS Data is provided "as is" without warranty of any representation of accuracy, timeliness, or completeness. The user acknowledges and accepts the limitations of the Data, including the fact that the Data is not intended to be a substitute for professional advice.

Three Rivers
PARK DISTRICT

NORTH

0 0.075 0.15 0.3 Miles

This page left intentionally blank